



Ultra Clean Systems - Model 1150 Specifications

Plumbing:

- Water inlet connection for **hot** and **cold** lines provided with Garden Hose Thread (GHT).
- Drain hose provided to wall mount or floor drain.
- Drain pump rated at 5.0 Gallons per minute.
- External rinse hose assembly provided.
- Preset water inlet temperature at 40°C.



Model 1150

Dimensions:

Cabinet with Lid Closed:	30" x 26" x 36" / 76.2cm x 66.04cm x 91.44 cm
Cabinet with Lid Open:	30" x 26" x 40" / 76.2cm x 66.04cm x 101.60cm
Inner Basin Dimensions:	25" x 12.25"
Basin Capacity:	12.16 US Gallons / 46.04 Liters
Total Basket Capacity:	2
Cabinet Material:	316 Stainless Steel

Irrigation & Ultrasonics:

Adjustable flow control allows user to set flow as needed.

- Irrigation pump pressure – 100psi maximum.
- Irrigation pump amperage – 1.0 amp.

Internal pump by-pass prevents damage due to zero or insufficient flow.

Ultrasonic frequency is rated at 40 kHz.

Electrical:

- Voltage:** 120, 208 or 220-230 Volts Single Phase.
If none is specified, 208 Volts will be used.
- Maximum Current:** 10 amps.

*Unit is not sensitive to or generates line transients.
Unit is not sensitive to or generates RF interference.*

Cleaner • Faster • Better



Ultra Clean Systems - Model 1150 Specifications

GENERAL INFORMATION

STANDARD CONNECTIONS ELECTRICAL

Voltage: 208 Volts AC / 50-60 Cycle

Amperage: 10

Plug: NEMA 6-15R

Dedicated Circuit: Yes

PLUMBING

Inlet Hose Connection-Cold:

$\frac{3}{4}$ Garden Hose Thread, 6' length from the mixing valve located in the lower rear of the machine.

Inlet Hose Connection-Hot:

$\frac{3}{4}$ Garden Hose Thread, 6' length from the mixing valve located in the lower rear of the machine.

Drain Hose:

$\frac{5}{8}$ I.D., 6' length from the mixing valve located in the bottom of the rear of the machine.

Mixing Valve Temperature:

110°F Preset at factory. Cold and Hot water lines should have 15-60 psi at connections.

Hot water should be minimum of 125°F.

Drain Requirement:

Floor or wall drain acceptable. Drain line is 6" off of floor.



IMPORTANT:

The above in-wall configuration is required prior to installation of ultrasonic cleaning system! Please call us if you have any questions.

OPTIONAL CONNECTIONS

PLUMBING

RO/DI Rinse Water Connection:

Connects to a $\frac{1}{4}$ " NPT female fitting. *Hose provided.*
Rinse water line should have 15-60 psi at connection.

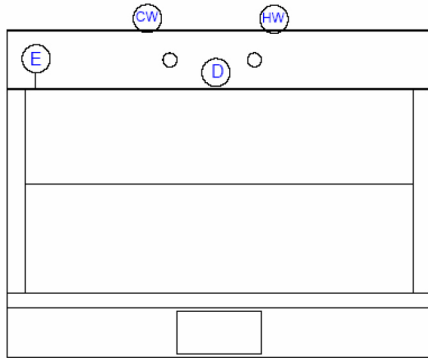
AIR CONNECTIONS:

Connects to a $\frac{1}{4}$ " NPT female fitting.
(For air purge option) *Air line provided.* Pressure should be 15-30 psi.

Cleaner • Faster • Better



Ultra Clean Systems - Model 1150 Specifications



TOP VIEW

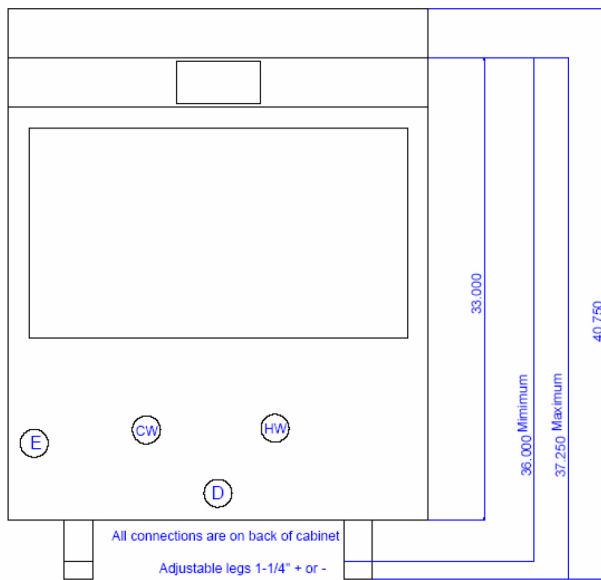
Utility Requirements

Utility	Connection On Back Of Unit	Supplied with Unit
E - Electrical	208 Volts 50-60 HZ 15 Amps	9 foot Cord
D - Drain	5/8" Barbed Hose Fitting	6' Hose
CW - Cold Water	1/2" Barbed Hose Fitting	6' Hose w/Garden Hose Connector
HW - Hot Water	1/2" Barbed Hose Fitting	6' Hose w/Garden Hose Connector

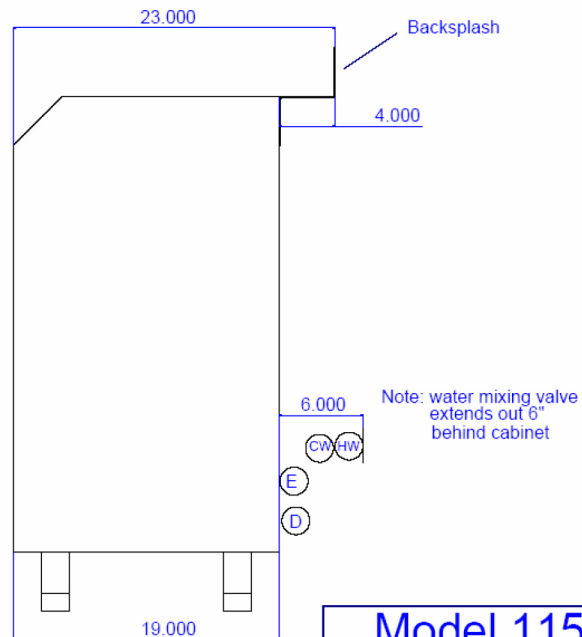
Notes:

It shall be customers responsibility to provide a properly sized and located drainage system in accordance with the national and local plumbing codes

All dimensions are in Inches



FRONT VIEW



SIDE VIEW

Model 1150	Ultra Clean System 11/15/2024
Installation Specifications	

