



### Overbed Table, Plastic Top

- Plastic top is durable, easy to clean and has a raised edge to contain spills
- Table surface won't crack or peel and includes two areas for placing drinks
- Tabletop can be raised or lowered in settings between 29" - 42" with light upward pressure
- Tabletop locks securely when height adjustment handle is released
- Swivel casters allow for easy maneuverability
- Strong "H" base provides security and stability
- Comes in only four parts for quick and easy assembly

CODE	DESCRIPTION
13069	Overbed Table w/Plastic Top, SilverVein, 1/cs



[Click here for PDF](#)

### Non-Tilt Overbed Tables

- Walnut, wood grain low-pressure laminate top
- Table top can be raised or lowered in infinite positions between 28" - 45"
- "H" base provides security and stability
- Silver Vein (Figure A) for (Model #13067) is easy-to-maintain and less institutional looking
- Tabletop locks securely when height adjustment handle is released
- It can be raised with slightest upward pressure
- For proper assembly, do not remove bottom screw (Figure B)
- 2" swivel casters allow for easy maneuverability

CODE	DESCRIPTION
13003	Overbed Table, Deluxe Non-Tilt, 1/cs
13067	Overbed Table, SilverVein, Deluxe, 1/cs



[Click here for PDF](#)

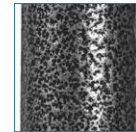


FIGURE A



FIGURE B



FIGURE A



FIGURE B

### Deluxe, Tilt-Top Overbed Table

- Easily assembled
- Walnut, wood grain low-pressure laminate top
- Top can be tilted 33° in either direction (Figure A)
- Top can be raised or lowered in infinite settings between 29.5" - 46"
- Swivel casters allow for easy maneuverability
- Chrome-plated steel "H" base provides security and stability
- Tabletop locks securely when height adjustment handle is released it can be raised with the slightest upward pressure
- For proper assembly, do not remove bottom screw (Figure B)

CODE	DESCRIPTION
13008	Overbed Table, Tilt-Top, 1/cs



[Click here for PDF](#)

