

Quarterly Promotions!

Purchase the DME-01 or RMK05 Kit,
get a **FREE Perform instrument!** (CF100-S value \$89)

DME-01 Kit Introductory Price \$514



DME-01 contains:

- 5x FXH150 3D Fusion™ Firm bands
- 10x FXH200 3D Fusion™ Firm bands
- 20x FXH300 3D Fusion™ Firm bands
- 50x RM500H Margin Elevation band reels
- 1x RMH-100 Reel Matrix™ tensioning instrument
- 20x FXYL 3D Fusion™ wedges
- 20x FXBL 3D Fusion™ wedges
- 20x FXOR 3D Fusion™ wedges
- 20x FXGR 3D Fusion™ wedges

Predictably build a strong foundation!

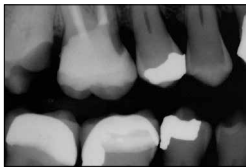


Extra deep restorations are a significant challenge.



Relocate the margin with confidence!

Clinical Case: The margin elevation technique allows proper isolation and elevation of deep margin areas prior to restoring with an indirect partial coverage restoration (inlay or onlay). The use of the Garrison® Reel Matrix™ margin elevation band allows proper adaptation and seal of these deep areas so that a composite margin elevation can be performed.



Pre-op X-ray shows the margin location for #17 subgingivally prior to elevation.



Seat the margin elevation band subgingivally. The narrowness of the matrix will allow it to slide subgingivally and seal the margin efficiently.



Seal the dentin and elevate the deep margin with restorative composite.

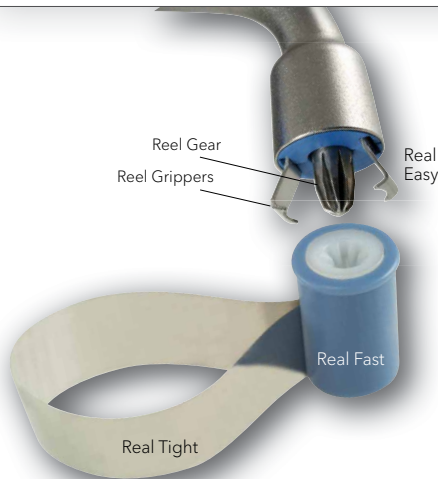


Remove the matrix and finish with a #12 blade to remove any flash. The deep margin has been relocated 1-2 mm supragingival for predictable isolation and delivery of an indirect bonded restoration.



Post-op X-ray shows the completed margin elevation prior to final restoration being completed.

Photos courtesy of Matthew A. Nejad DDS, Beverly Hills, CA



\$674

RMK05 contains:

- 10 RM100D 5mm dead-soft matrices
- 10 RM200D 6.3mm dead-soft matrices
- 10 RM100H 5mm regular matrices
- 10 RM200H 6.3mm regular matrices
- 10 RM100B 5mm blue matrices
- 10 RM200B 6.3mm blue matrices
- 20 RM500H Margin Elevation band reels
- 1 RMH-100 Reel Matrix™ tensioning instrument
- 1 PerForm™ instruments (set of 2)

MSRP/Canadian dollars



*To redeem goods, fax your dealers invoice dated 1/4/23 - 30/6/23 to: Garrison Dental Solutions, Attn: Liz Kammers 1-616-842-2430; or email a scanned copy of the invoice to ekammers@garrisdental.com with INCAQ223-A in the Subject line. Allow 4-6 weeks for delivery.

Garrison

Toll-free 888.437.0032
Fax 616.842.2430
gds@garrisdental.com
www.garrisdental.com

ORDER TODAY! 888.437.0032
or contact your Dealer Representative.

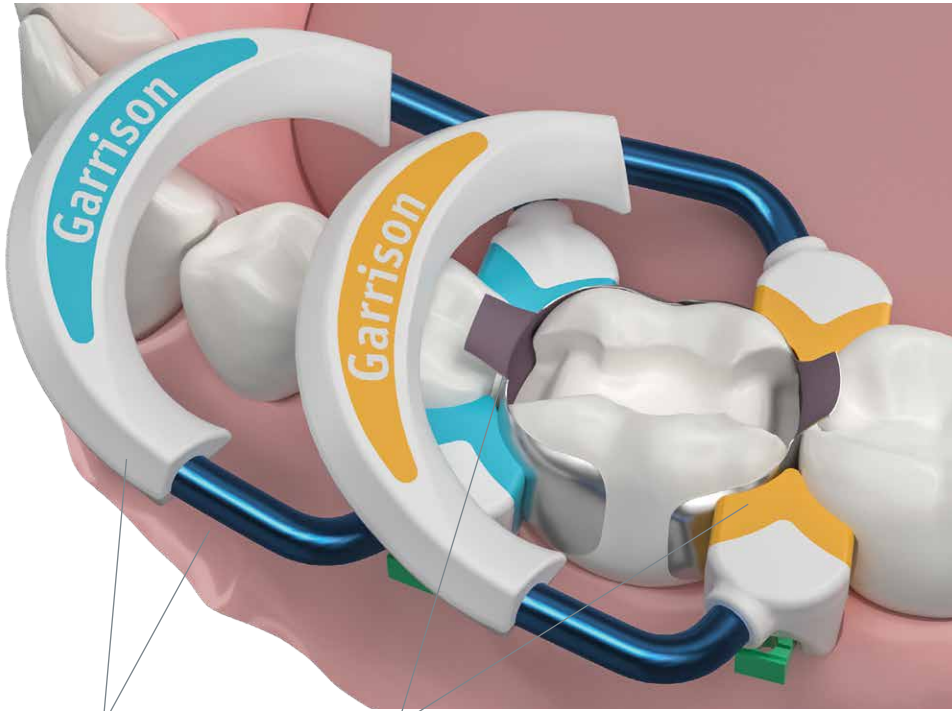
INCAQ223-A

© 2023 Garrison Dental Solutions, LLC

the all new

STRATA-G™

Now faster and more predictable!



Reliable, tight contacts

Drawn-wire nickel titanium plus PEEK produces consistent separating pressure longer!

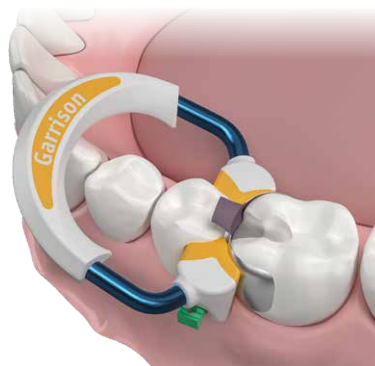
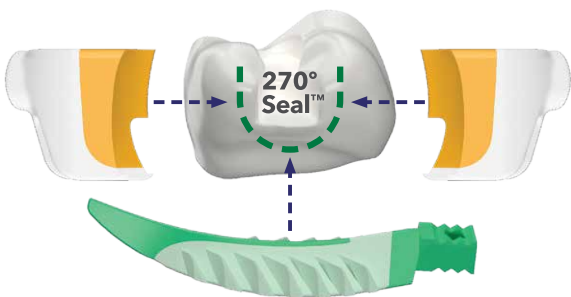
Easier, more predictable contours

Marginal ridge enhancements built into the matrix bands AND rings help provide that finishing flair!

Faster, less frustrating Class IIs

The Strata-G™ rings, bands and wedges combine for a 270° Seal™ for ultimate flash control. The rings won't spring off the tooth, and the amazing Wide Preparation ring makes tough wide preps no problem.

Strata-G™ forms a 270° Seal™ for ultimate flash control.



Flexibility for a better cervical seal!



Anatomy top to bottom



Introductory Price **\$875**

SGR-KSH-10 contains:

- 1 Short Ring (blue)
- 1 Tall Ring (orange)
- 1 Wide Prep Ring (green)
- 50 Assorted Matrix Bands
- 50 Assorted Firm Matrix Bands
- 10 VariStrip™
- 80 Assorted Wedges
- 12 Assorted Rally™ Polishers
- 1 Ring Placement Forceps (FXP01)

Garrison

Toll-free 888.437.0032
Fax 616.842.2430
gds@garrisondental.com
www.garrisondental.com

ORDER TODAY! 888.437.0032
or contact your Dealer Representative.

INCAQ223-B