

# 1000 REASONS

## TO TRADE UP



# \$1000 REBATE

When you **trade-in**  
your old sterilizer  
for a STATIM 2000 G4  
or STATIM 5000 G4

## SCAN

Effective: August 1 - November 30, 2025

## TO REDEEM YOUR REBATE



[www.scican.com/promotions](http://www.scican.com/promotions)

 COLTENEGROUP

**SciCan** | Your Infection  
Control Specialist

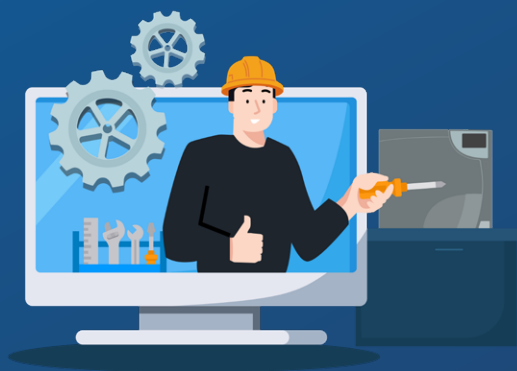
SciCan products purchased in refurbished condition, or under SciCan's discount programs do not qualify for quarterly promotions. Promotions are stand-alone and are only applicable for orders placed in Canada. They cannot be offered in conjunction with any other on-going dealer or end-user promotion and are only valid during the promotion period. STATIM is a registered trademark of SciCan Ltd. Request for rebate must be received by December 12, 2025 at [www.scican.com/promotions](http://www.scican.com/promotions).

# Smarter Together

Optimize your equipment.  
Empower your team.



Equipment with G4 Technology powered by the myCOLTENE web portal can improve your practice in many ways.



## Device Support

**Cycle Fault Notifications** – If a cycle fault occurs, connected G4 equipment automatically sends data to our myCOLTENE cloud portal, so we can quickly help solve any issue.

**6-Month Extended Warranty** – We support not only your equipment but your success!

**Automatic cycle fault email notifications to dealer service department or technicians from myCOLTENE** (optional) – saving time, money, and potentially unnecessary service calls.

## On-Demand Information

**Become Equipment Experts** – New staff might need a refresher. Search the latest digital versions of quick start guides, manuals, tutorials, troubleshooting and installation instructions for quick and easy explanations.

**Stay Up to Date** – Firmware updates are automatically sent to connected G4 equipment and easily installed with user approval.

**Keep Equipment at Peak Performance** – Your myCOLTENE dashboard tells you if a software update is available to download so you can be confident your unit is operating at its best.



## Traceability

**Secured Cloud Storage and Improved Records** – All cycle data is stored on the unit's internal memory, in the cloud through the myCOLTENE web portal, and on the included USB, satisfying any local datalogging requirements.

**Total Traceability for Teams** – Tracking equipment use creates accountability and supports your office's reprocessing protocols. Enhanced settings enable comprehensive instrument tracking options for your infection control equipment.